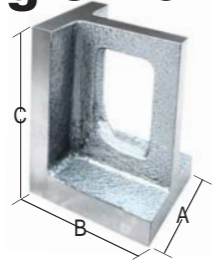


Universal Right Angle Irons

Right angle irons can be used widely for fixture components as well as for checking squareness and parallelism. All faces, ends and edges are finished square and parallel so that work can be clamped to either face and rotated through three planes without the need for repositioning. The opening provides a convenient hand grip for lifting and also simplifies clamping to the work table. Supplied in finishes precision-ground.



Model No.	A	B	C	Model No.	A	B	C
RAI-345	3-3/4"	4"	5"	RAI-5810	5-1/2"	8"	10"
RAI-446	4"	4"	6"	RAI-668	6"	6"	8"
RAI-456	4-1/2"	5"	6"	RAI-81012	8"	10"	12"
RAI-458	4"	5"	8"	RAI-8916	8"	9"	16"
RAI-5812	5"	8"	12"	RAI-101216	10"	12"	16"
RAI-5710	5-1/2"	7"	10"	RAI-121224	12"	12"	24"

Compound Angle Plate

- Solid one-piece steel construction for longer life.
- Hardened to RC 58-62.
- Features ground vees for convenient holding of small round parts.
- Includes one clamp.
- Square and parallel within .0002".
- Dimensions 6" x 4" x 4" x 1".



Model No.:CAP-644

Precision Ground Steel Angle Plates

- Solid, one piece angle plates are made from hardened steel.
- Square and parallel are .0002".

Model No.	Dimensions
PAP-333	3" x 3" x 3" x 1 x 1/2"
PAP-334-SO	4" x 3" x 3" x 1"
PAP-443-H	4" x 4" x 3" x 1-1/8"
PAP-443-NH	4" x 4" x 3" x 1-1/8"
PAP-444	4" x 4" x 4" x 1-1/4"
PAP-644	6" x 4" x 4" x 1-1/4"
PAP-644-SI	6" x 6" x 4" x 1-1/4"



PAP-444



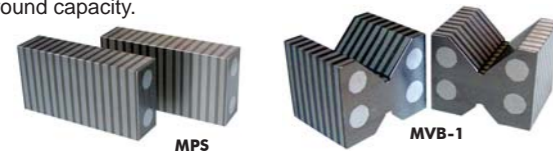
PAP-443-H



PAP-443-NH

Magnetic Chuck, V Blocks And Parallels

High quality magnets hold work in any direction on magnetic chucks. The premium quality steel used in all V Blocks and parallels is selected for the highest magnetic transfer and low retention of magnetic flux. Large top V with 2" dia. round capacity and a small bottom V with 1/2" dia. round capacity.



Model No.	Description
MVB-1	Pair of small V-Blocks 1-7/8 x 2-3/8 x 2"
MVB-2	Individual Long V-Blocks 1-7/8 x 2-3/8 x 4-3/8"
MVB-3	Pair of Long V-Blocks 1-7/8 x 2-3/8 x 4-3/8"
MPS	Pair of Parallels 1 x 2 x 4"
MVBP	Combination set of one pair small V-Blocks and one pair Parallels.

Sine Bars

- Hardened and ground

Model No.	Dimensions
SBE-212	2-1/2" x 1"
SBE-5	5" x 1"

Tolerances	
Top Parallel to Bottom of Rolls	± .0004"
Distance between Center of Rolls	± .0004"



SBE-5

"V" Sine Bars

- 5" Sine bar. • 1-1/4" Wide.
- 1" Round capacity.
- Accurate to .0003".
- Hardened and ground.
- Includes clamp.



Sine Bar Set

Eliminate constant tables to calculate angles, and gage blocks to set angles. Simply choose the angle setting blocks required for the desired angle. Quick and simple set-up for use in for grinding, milling, drilling and inspection applications.

Complete set includes:

- One 5" sine bar, 1" square, hardened and precision ground.
- Sine bar is parallel top to bottom of rods within .0002".
- 18 Risers with a range of 1/2° to 15° resulting angle, including 2 risers providing "taper-per-foot" of 1/4° and 1/2°
- Exact constant within .0001".
- Shop hardened fitted molded case.

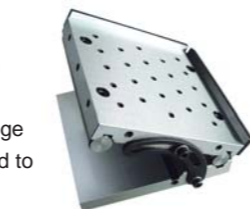


Model No.:SBS-5

Sine Plate Kits

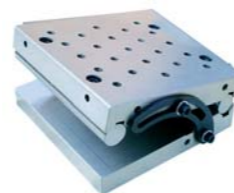
- Built -in dual .200" minute steps in the gage block roll.
- All hinge block assemblies and gage block rolls already precision ground to within .0002".
- Includes two end rails and one locking strap.
- Distance between center rolls 5.000" +/- 0.0002".
- HRC 58-62.
- Tapped hole in top of plate.

Model No.	Dimensions	Center Distance of Rolls
SPA-312/6/214	3-1/2"x6"x2-1/4"	5"
SP-6/6/2	6"x6"x2"	5"
SPA-6/6/238	6"x6"x2-3/8"	5"
SP-6/12/258	6"x12"x2-5/8"	10"



SP-662

Single Angle Sine Plates



3-1/2" x 6" x 2-1/4" (12)1/4" x 20
Model No.: SPA-312/6/214
6" x 6" x 2-3/8" (23)1/4" x 20
Model No.: SPA-6/6/238

Surface Plate-Black Granite

- Granite Surface Plates meet or exceed Federal Specification GGG-PG463c.
- Does not rust or corrode.
- Does not nick or burr.
- Harder than steel.
- Retains accuracy for years.
- Guaranteed repeat reading.
- Auto-collimator checked for overall accuracy.



Size	Thickness	Toolroom Grade"B"			Inspection Grade"A"			Laboratory Grade"AA"	
		Overall Accuracy	O-Ledge Model No.	2-Ledge Model No.	Overall Accuracy	O-Ledge Model No.	2-Ledge Model No.	Overall Accuracy	O-Ledge Model No.
9 x 12"	3"	.0001"	SP-09123B0	SP-09123B2	.00005"	SP-09123A0	SP-09123A2	.000025"	SP-09123AA0
12 x 18"	3"	.0001"	SP-12183B0	SP-12183B2	.00005"	SP-12183A0	SP-12183A2	.000025"	SP-12183AA0
18 x 24"	3"	.00015"	SP-18243B0	SP-18243B2	.000075"	SP-18243A0	SP-18243A2	.000037"	SP-18243AA0
18 x 24"	4"	.00015"	SP-18244B0	SP-18244B2	.000075"	SP-18244A0	SP-18244A2	.000037"	SP-18244AA0
24 x 36"	4"	.0002"	SP-24364B0	SP-24364B2	.0001"	SP-24364A0	SP-24364A2	.00005"	SP-24364AA0
36 x 48"	6"	.0004"	SP-36486B0	SP-36486B2	.0002"	SP-36486A0	SP-36486A2	.0001"	SP-36486AA0
48 x 72"	6"	.0007"	SP-48726B0	SP-48726B2	.0003"	SP-48726A0	SP-48726A2	.000015"	SP-48726AA0
48 x 72"	8"	.0007"	SP-48728B0	SP-48728B2	.0003"	SP-48728A0	SP-48728A2	.000015"	SP-48728AA0

- We can make all sizes according to user's order

Granite Inspection Surface Plate

grade 000=1(1+d/1000)um
grade 00=2(1+d/1000)um
grade 0=4(1+d/1000)um
(d is the length of the plate's diagonal, unit is mm)

"CHANGDA" granite surface accuracy please refer advanced leading countries standard flatness tolerance.

Dimension(mm) L x W x H	Grade 000		Grade 00		Grade 0	
	Model No.	Tolerance(um)	Model No.	Tolerance(um)	Model No.	Tolerance(um)
300 x 200 x 50	SPM000-30205	1.5	SPM00-30205	3	SPM0-30205	5.5
300 x 300 x 70	SPM000-30307	1.5	SPM00-30307	3	SPM0-30307	6
400 x 250 x 70	SPM000-40257	1.5	SPM00-40257	3	SPM0-40257	6
400 x 400 x 100	SPM000-404010	2	SPM00-404010	3.5	SPM0-404010	6.5
630 x 400 x 100	SPM000-634010	2	SPM00-634010	3.5	SPM0-634010	7
630 x 630 x 100	SPM000-636310	2	SPM00-636310	4	SPM0-636310	8
800 x 500 x 130	SPM000-805013	2	SPM00-805013	4	SPM0-805013	8
1000 x 630 x 150	SPM000-1006315	2.5	SPM00-1006315	4.5	SPM0-1006315	9
1000 x 750 x 150	SPM000-1007515	2.5	SPM00-1007515	5	SPM0-1007515	9
1000 x 1000 x 150	SPM000-10010015	2.5	SPM00-10010015	5	SPM0-10010015	10
1600 x 1000 x 200	SPM000-16010020	3.5	SPM00-16010020	6	SPM0-16010020	12
2000 x 1000 x 250	SPM000-20010025	3.5	SPM00-20010025	6.5	SPM0-20010025	13
1600 x 1600 x 300	SPM000-16016030	3.5	SPM00-16016030	6.5	SPM0-16016030	13
2000 x 1600 x 300	SPM000-20016030	3.5	SPM00-20016030	7	SPM0-20016030	14

- We can make all sizes according to user's order

Granite Inspection Surface Plate Stand

- Overall working height 36"(900mm).
- 4 leveling screws at the bottom of stands, 5 small jacks on the top of stands to adjust level.
- Exist all dimensions for surface plates from 18x24" up to 48x72" (600x450mm up to 1800x1200mm).
- Support plates supplied with their stand are provided with recesses or angle steel.



Granite surface plate stand	
Model No.	Size (Inch)
SPS-001A	18 x 24
SPS-002A	24 x 36
SPS-003A	36 x 48
SPS-004A	36 x 60
SPS-005A	48 x 72



Big Jack

Suitable for surface plate over 80"/2000mm in length (5 pcs for one set)

Model No.: MT-2000